



THE VILLAS AT  
MEADE POND

**Presented by:**  
Lisa Lankey, Broker  
Coldwell Banker TREG

**Office phone:** 920.993.5753

**E-mail:** llankey@coldwellhomes.com

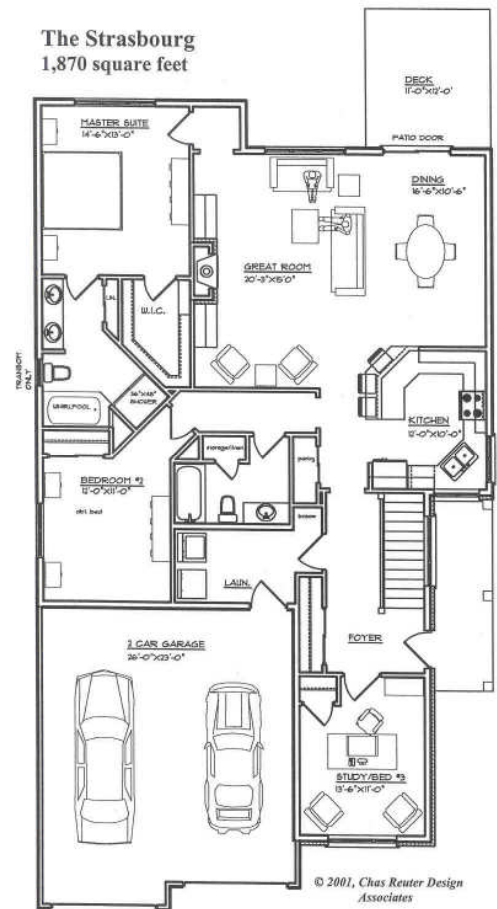
**CONDO: \$299,900    825 Pondview Court, Appleton    1 story, 3 bedrooms, 3 bathrooms**

<u>ROOM</u>	<u>SIZE</u>
Foyer	16'0"x8'6"
Great Room	20'3"x14'0"
Dining	12'0"x11'0"
Kitchen	17'0"x14'6"
Mud Room	6'4"x6'0"
Laundry	6'4"x6'0"
MasterBdrm	14'6"x12'11"
Bedroom	12'4"x11'2"
Bdrm/Office	13'6"x11'0"
Master Bath	Irregular
Main Bath	Irregular
Rec Room	705 sq. ft.
3rd Bath	9'8"x12'6"



**Approximate square footage: 2,711**  
(includes finished portion of lower level)

**The Strasbourg**  
1,870 square feet



**Floor Plan of First Floor**

(Note: kitchen and laundry spaces revised from plan)

**Directions:**

North on Meade to Hwy. JJ. Located at the SE corner of North Meade and Hwy JJ on Pondview.

The Villas at Meade Pond offer five unique and distinctive custom designed single-family patio homes. Our standards are everyone else's upgrades. This unit features oversized kitchen island with granite counter top, custom alder wood cabinets, wood floors, huge kitchen, and fully landscaped lot.

For more information on other plans or building opportunities in Meade Pond, contact Todd Platt, Broker, at 730-4285.

**Schools:** Ferber/Einstein/North

**Exterior:** Brick

**Fireplace:** Yes

**Central Air:** Yes

**Monthly Maintenance Fee:** \$150.00

[www.meadepond.com](http://www.meadepond.com)



**Disclaimer:** The information provided by the sellers or other third party sources has not been verified by the broker or the broker's subagents and said parties take no responsibility for the accuracy of the information given.